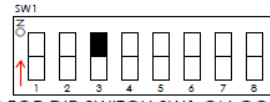


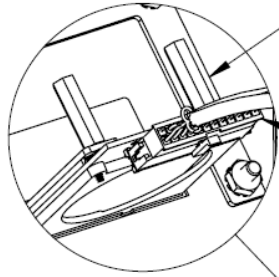
MOUNT READER TO MACHINE USING KIT-050-6-010.



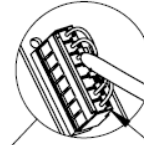
IMPORTANT!
LOOK FOR DIP SWITCH SW1 ON CONTROL BOARD.
MAKE SURE THAT SWITCH SETTING 3 IS SET TO ON.



HAZARD
MAKE SURE MACHINE IS
UNPLUGGED BEFORE WIRING!



3 CONNECT J1 OF CBL-050079 TO READER.



5 CONNECT J2 OF CBL-050079 TO
MACHINE CONTROL H3.

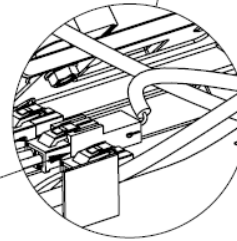
CABLE HARNESS KIT:
KIT-HRN-050090

ROUTE CABLE USING ADHESIVE CABLE CLAMPS &
ZIP TIES AS NEEDED. SECURE OUT OF THE WAY.

6

CONNECT J3 OF CBL-050079 TO ONE OF THE MATING
CONNECTORS ON 24V SIDE OF MACHINE TRANSFORMER.

4



Heartland
PAYMENT SYSTEMS
MICROPAYMENTS

2115 CHAPMAN ROAD, SUITE 159
CHATTANOOGA, TN 37421

TITLE:
WAVERIDER ACA PREP-FOR-CARD MACHINE
WIRING DIAGRAM - REAR CONTROL SINGLE
WASHERS AND DRYERS

PROPRIETARY AND CONFIDENTIAL

THE INFORMATION CONTAINED IN THIS DRAWING IS THE SOLE PROPERTY OF
HEARTLAND MICROPAYMENTS. ANY REPRODUCTION IN PART OR AS A WHOLE
WITHOUT THE WRITTEN PERMISSION OF HEARTLAND MICROPAYMENTS IS PROHIBITED.

COMMENTS:

	NAME	DATE
DESIGN:	C. Downey	3/5/2015
APPROVAL:	J. Wormsley	3/6/2015
QUALITY:	S. Cooper	3/11/2015
PURCHASING:	S. Holbrook	3/5/2015

SIZE
A

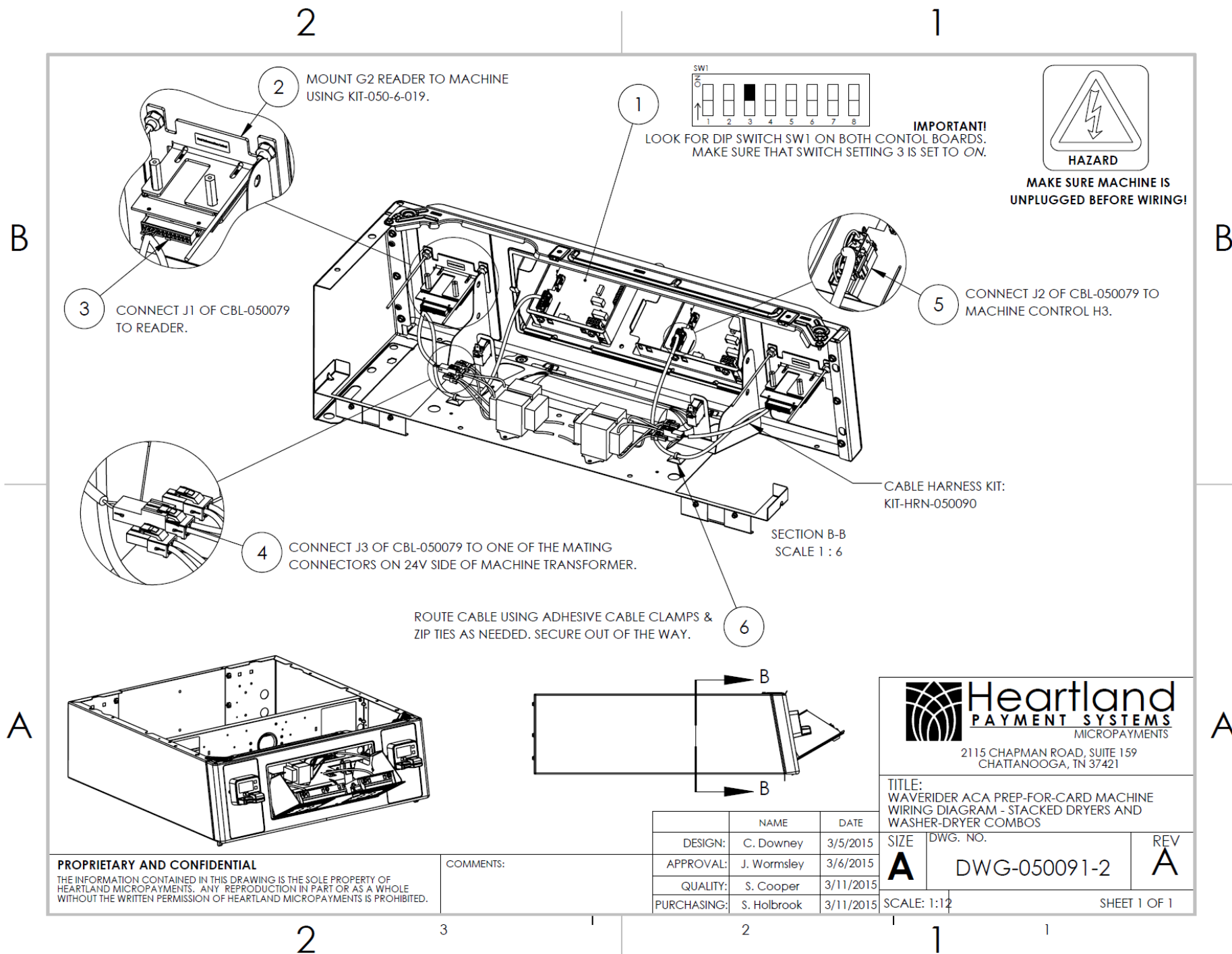
DWG. NO.

DWG-050091-1

REV
A

SCALE: 1:6

SHEET 1 OF 1

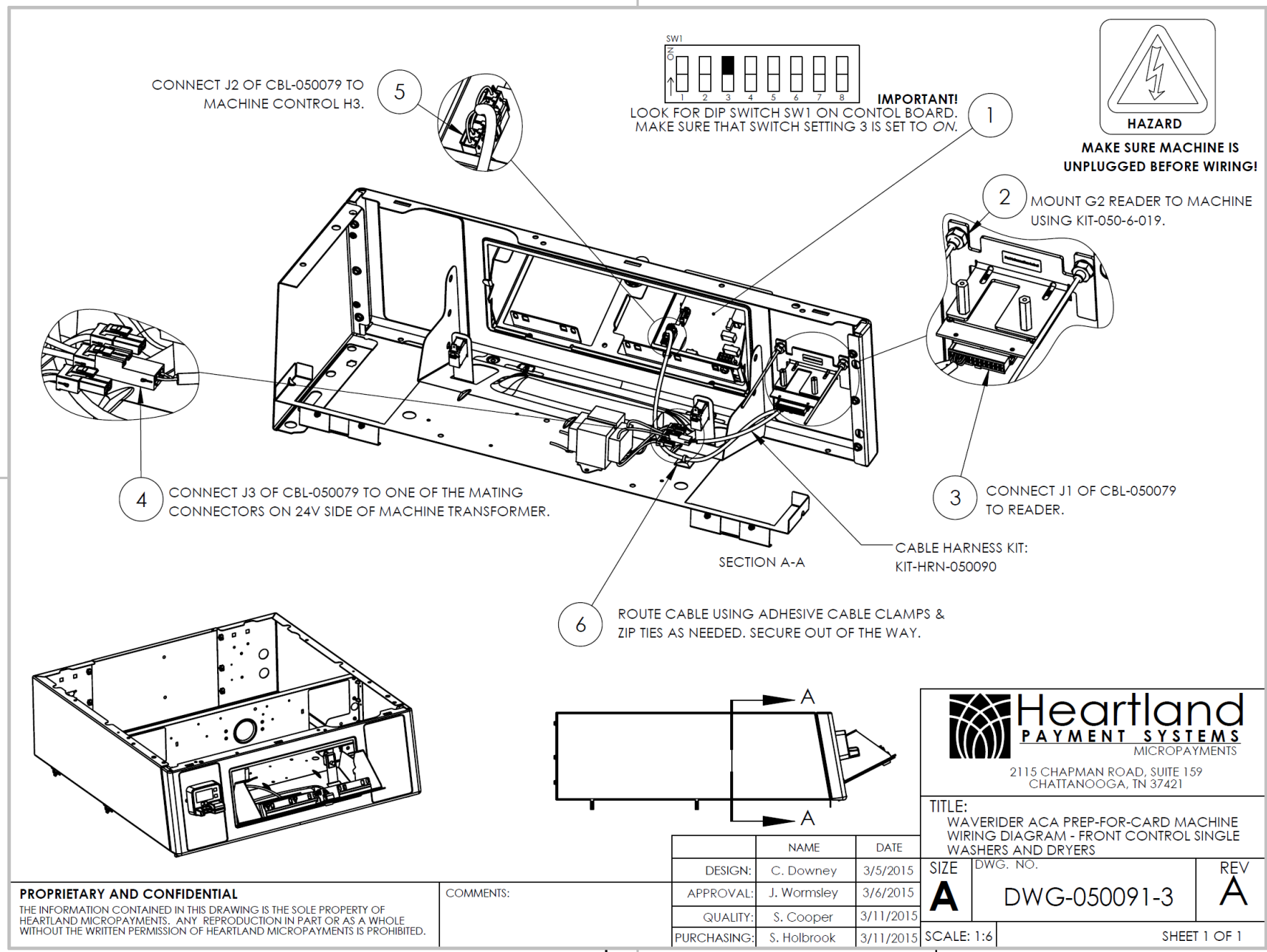


B

A

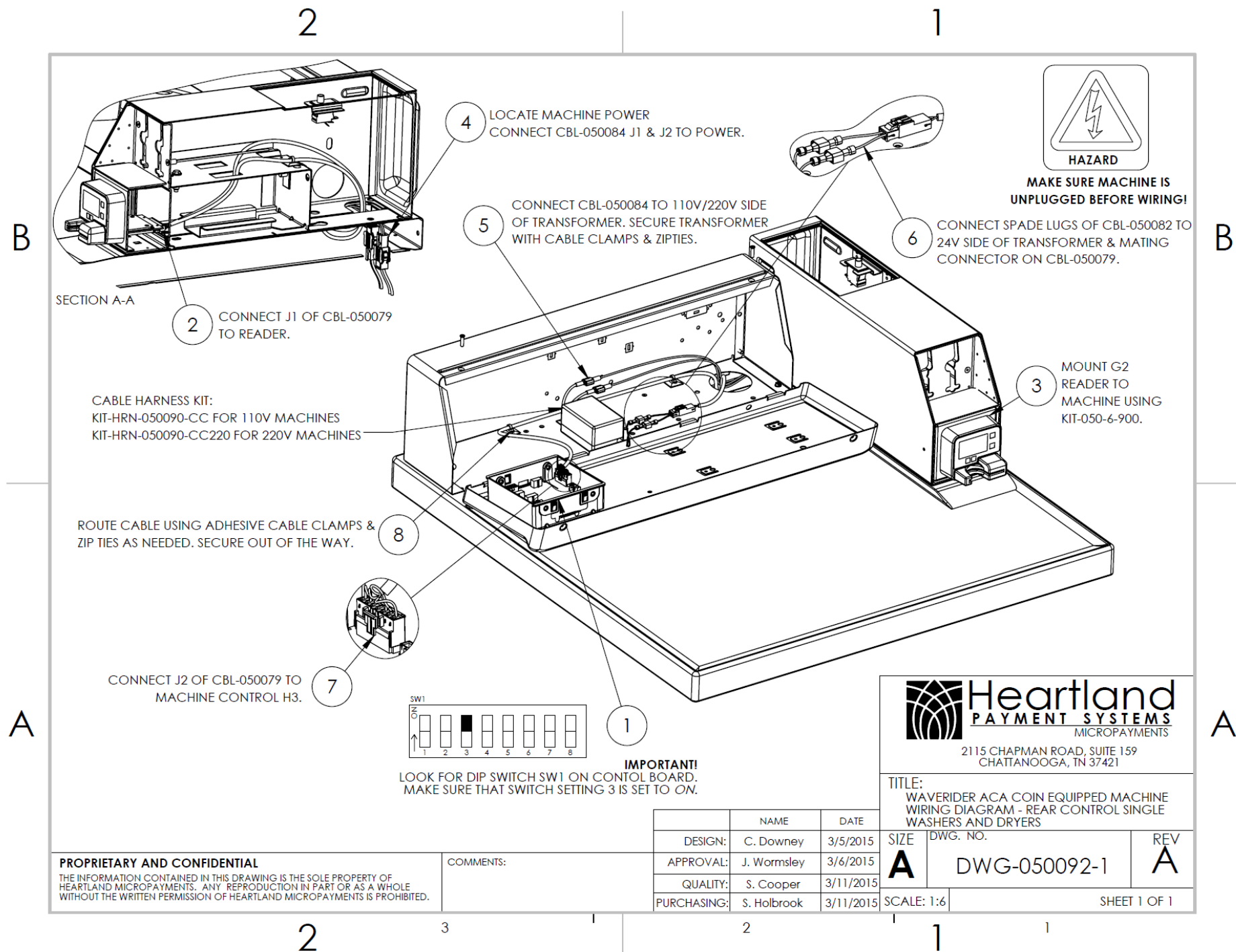
B

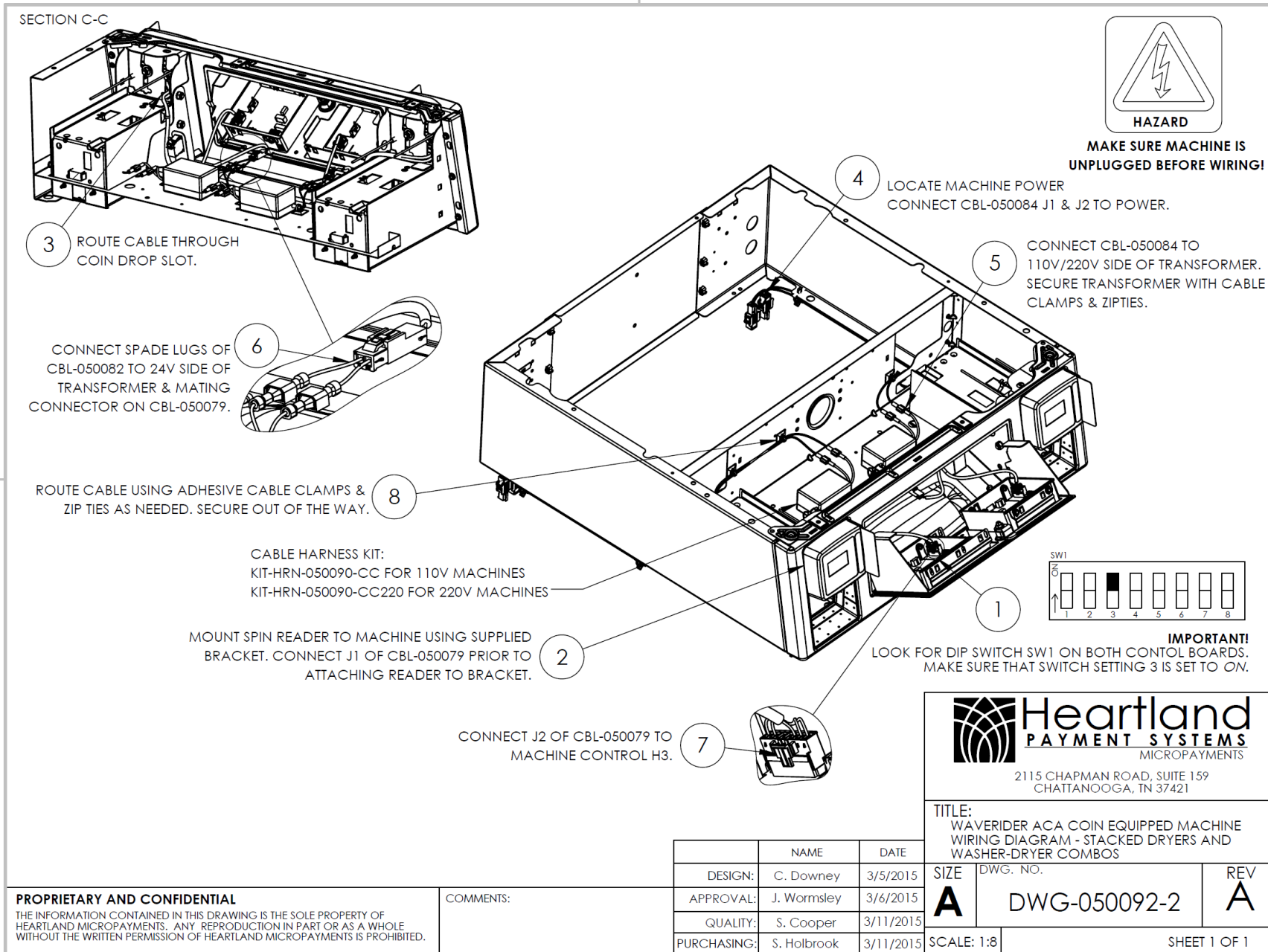
A



PROPRIETARY AND CONFIDENTIAL
THE INFORMATION CONTAINED IN THIS DRAWING IS THE SOLE PROPERTY OF HEARTLAND MICROPAYMENTS. ANY REPRODUCTION IN PART OR AS A WHOLE WITHOUT THE WRITTEN PERMISSION OF HEARTLAND MICROPAYMENTS IS PROHIBITED.

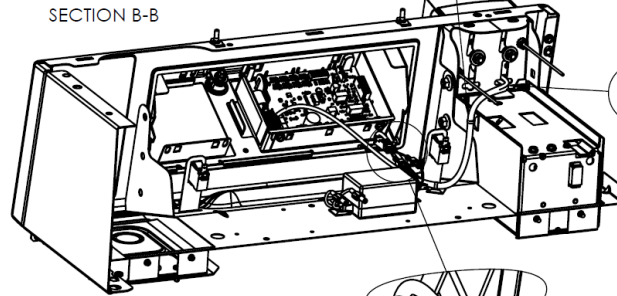
COMMENTS:





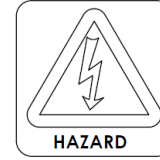
ROUTE CABLE USING ADHESIVE CABLE CLAMPS & ZIP TIES AS NEEDED. SECURE OUT OF THE WAY.

SECTION B-B



LOCATE MACHINE POWER
CONNECT CBL-050084 J1 & J2 TO POWER.

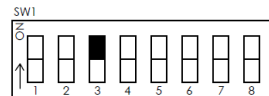
ROUTE CABLE THROUGH
COIN DROP SLOT.



MAKE SURE MACHINE IS
UNPLUGGED BEFORE WIRING!

CONNECT SPADE LUGS OF
CBL-050082 TO 24V SIDE OF
TRANSFORMER & MATING
CONNECTOR ON CBL-050079.

MOUNT SPIN READER TO MACHINE USING SUPPLIED
BRACKET. CONNECT J1 OF CBL-050079 PRIOR TO
ATTACHING READER TO BRACKET.



IMPORTANT!
LOOK FOR DIP SWITCH SW1 ON CONTROL BOARD.
MAKE SURE THAT SWITCH SETTING 3 IS SET TO ON.

ROUTE CABLE USING ADHESIVE CABLE CLAMPS &
ZIP TIES AS NEEDED. SECURE OUT OF THE WAY.

CONNECT J2 OF CBL-050079 TO
MACHINE CONTROL H3.

CONNECT CBL-050084 TO
110V/220V SIDE OF TRANSFORMER.
SECURE TRANSFORMER WITH CABLE
CLAMPS & ZIPTIES.

CABLE HARNESS KIT:
KIT-HRN-050090-CC FOR 110V MACHINES
KIT-HRN-050090-CC220 FOR 220V MACHINES



2115 CHAPMAN ROAD, SUITE 159
CHATTANOOGA, TN 37421

TITLE:
WAVERIDER SERIAL ACA COIN EQUIPPED
MACHINE WIRING DIAGRAM - FRONT CONTROL
SINGLE WASHERS AND DRYERS

PROPRIETARY AND CONFIDENTIAL

THE INFORMATION CONTAINED IN THIS DRAWING IS THE SOLE PROPERTY OF
HEARTLAND MICROPAYMENTS. ANY REPRODUCTION IN PART OR AS A WHOLE
WITHOUT THE WRITTEN PERMISSION OF HEARTLAND MICROPAYMENTS IS PROHIBITED.

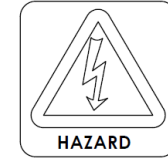
COMMENTS:

	NAME	DATE
DESIGN:	C. Downey	3/5/2015
APPROVAL:	J. Wormsley	3/6/2015
QUALITY:	S. Cooper	3/11/2015
PURCHASING:	S. Holbrook	3/11/2015

SIZE	DWG. NO.	REV
A	DWG-050092-3	A
SCALE: 1:8	SHEET 1 OF 1	

Note:

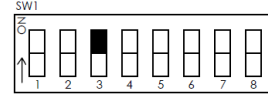
Instructions for SPIN mounting (DOC-WR-SPIN-INST) can be found at
<http://www.heartlandmicropayments.com/ProductLiterature.aspx>



**MAKE SURE MACHINE IS
UNPLUGGED BEFORE WIRING!**

MOUNT SPIN READER TO MACHINE
ACCORDING TO DOC-WR-SPIN-INST.
CONNECT J1 OF CBL-050079 PRIOR TO
ATTACHING READER.

IMPORTANT!
LOOK FOR DIP SWITCH SW1 ON THE CONTROL BOARD.
MAKE SURE THAT SWITCH SETTING 3 IS SET TO ON.



CONNECT CBL-050084 TO
110V/220V SIDE OF TRANSFORMER.
SECURE TRANSFORMER WITH CABLE
CLAMPS & ZIPTIES.

CONNECT SPADE LUGS OF
CBL-050082 TO 24V SIDE OF
TRANSFORMER & MATING
CONNECTOR ON CBL-050079.

LOCATE MACHINE POWER
CONNECT CBL-050084 J1 & J2 TO POWER.

CABLE HARNESS KIT:
KIT-HRN-050090-CC FOR 110V MACHINES
KIT-HRN-050090-CC220 FOR 220V MACHINES

CONNECT J2 OF CBL-050079 TO
MACHINE CONTROL H3.

ROUTE CABLE THROUGH
PRE-DRILLED HOLE.

ROUTE CABLE USING ADHESIVE CABLE CLAMPS &
ZIPTIES AS NEEDED. SECURE OUT OF THE WAY.



2115 CHAPMAN ROAD, SUITE 159
CHATTANOOGA, TN 37421

TITLE:
WAVERIDER ACA COIN EQUIPPED MACHINE
WIRING DIAGRAM - FRONT CONTROL SINGLE
WASHERS AND DRYERS COIN & CARD

PROPRIETARY AND CONFIDENTIAL

THE INFORMATION CONTAINED IN THIS DRAWING IS THE SOLE PROPERTY OF
HEARTLAND MICROPAYMENTS. ANY REPRODUCTION IN PART OR AS A WHOLE
WITHOUT THE WRITTEN PERMISSION OF HEARTLAND MICROPAYMENTS IS PROHIBITED.

COMMENTS:

	NAME	DATE
DESIGN:	C. Downey	3/6/2015
APPROVAL:	J. Wormsley	3/6/2015
QUALITY:	S. Cooper	3/11/2015
PURCHASING:	S. Holbrook	3/11/2015

SIZE	DWG. NO.	REV
A	DWG-050092-5	A
SCALE: 1:10		SHEET 1 OF 1